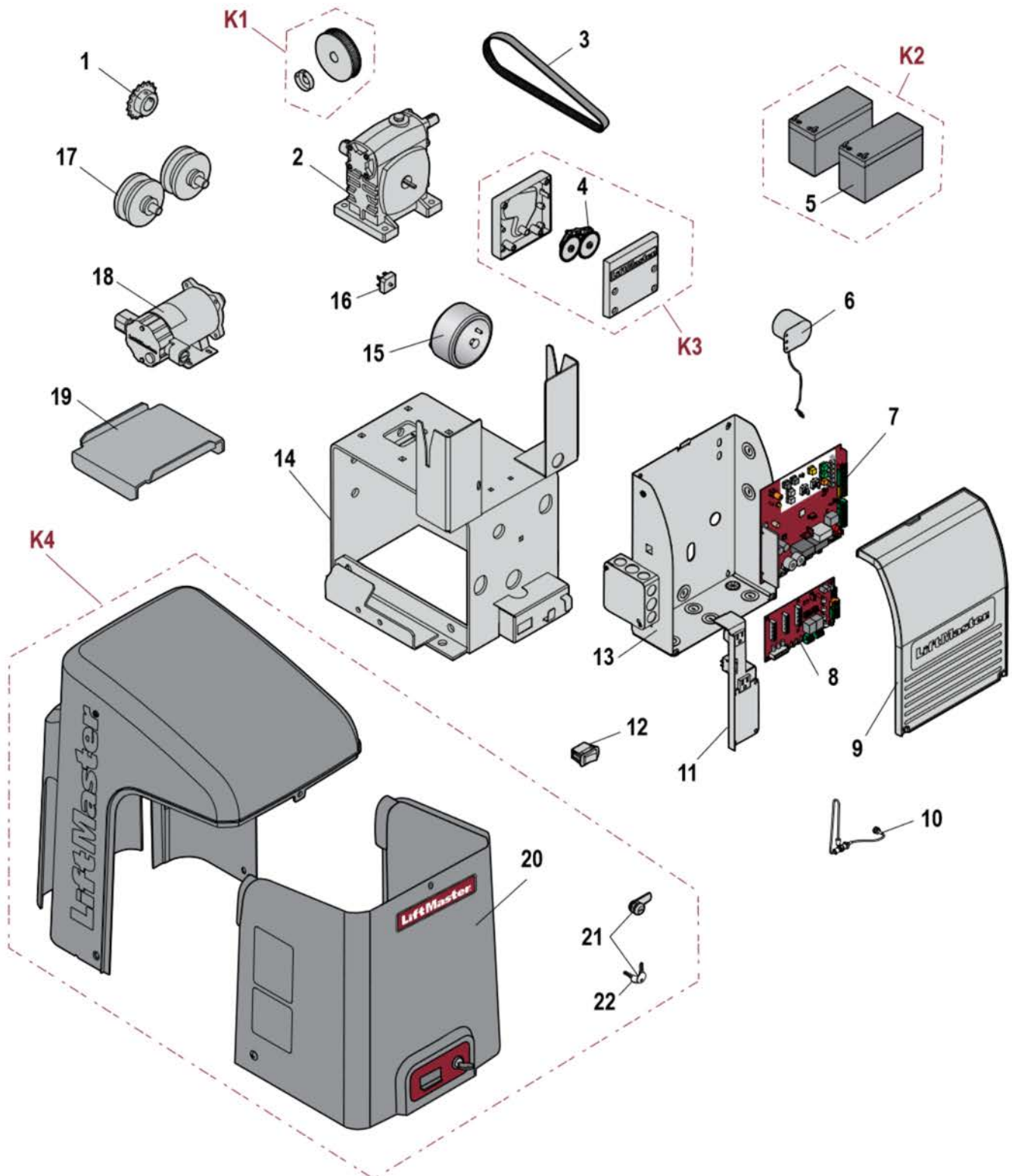


### CSL24U, CSL24UL, CSL24ULWK

#### REPLACEMENT PARTS DIAGRAM



## CSL24U, CSL24UL, CSL24ULWK

## INDIVIDUAL REPLACEMENT PARTS

KEY#	PART#	DESCRIPTION
1	<a href="#">K15-41B17LKGH</a>	OUTPUT SPROCKET
2	<a href="#">K32-34669-1</a>	GEAR REDUCER, 10:1, #60
3	<a href="#">K16-GT2-7</a>	TIMING BELT
4	<a href="#">K1A6408</a>	APE KIT, 24V
5	<a href="#">29-NP712</a>	BATTERY, 12V, 7AH
6	<a href="#">K94-35152</a>	PIEZO ALARM
7	<a href="#">K1D8389-1CC</a>	MAIN BOARD, DC PAD-MOUNTS, UL325
8	<a href="#">K1D8387-1CC</a>	EXPANSION BOARD, UL325
9	<a href="#">K13-34729</a>	E-BOX COVER
10	<a href="#">K77-36541</a>	ANTENNA
11	<a href="#">K76-34728</a>	EMI BOARD WITH POWER SWITCH
12	<a href="#">K180A0357</a>	RESET SWITCH
13	<a href="#">K77-36542</a>	E-BOX
14	<a href="#">K73-34718-5</a>	CHASSIS
15	<a href="#">K204C0211</a>	TRANSFORMER
16	<a href="#">K52C0481</a>	BRIDGE RECTIFIER KIT
17	<a href="#">K75-50090</a>	IDLER PULLEY, Q013
18	<a href="#">K76-36398</a>	MOTOR, 1/2HP, 24VDC
19	<a href="#">K10-34758-2</a>	HEATER BATTERY BRACKET
20	<a href="#">K77-37852</a>	COVER, GRAY, CSL24U
	<a href="#">K77-39426</a>	COVER, GRAY CSL24UL
21	<a href="#">K75-36260</a>	LOCK AND KEYS
22	<a href="#">K80-50295</a>	ACCESS DOOR KEYS, QTY 2, Q118
<b>NOT SHOWN IN DIAGRAM</b>		
	<a href="#">K1D8389-1CCU</a>	UPGRADE KIT WITH EYES, DC PAD, UL325
	<a href="#">77-36764</a>	CRANK BRACKET KIT
	<a href="#">K07-50637</a>	CHAIN BOLT, Q003
	<a href="#">K94-34778</a>	BOARD TO BOARD WIRE HARNESS, 24V
	<a href="#">K94-36531</a>	RESET SWITCH WITH ID RESISTOR KIT
	<a href="#">K94-37205</a>	BATTERY HARNESS, 7AH, CSL24V, CSW24V
	<a href="#">K80-3001</a>	BOLT, 5/16"-18X32

## SERVICE KITS

KEY#	PART#	DESCRIPTION
K1	<a href="#">K17-36530</a>	GEAR REDUCER AND MOTOR PULLEY KIT
K2	<a href="#">K74-30762</a>	BATTERY PACK, 12V, 7AH, QTY. 2
K3	<a href="#">K76-34697</a>	APS ENCODER KIT, 24V
K4	<a href="#">K77-37856</a>	COVER, GRAY, RSW12U, CSL24U, CSW24U
<b>NOT SHOWN IN DIAGRAM</b>		
	<a href="#">LMWEKITU</a>	MONITORED WIRELESS EDGE KIT

NOTE: Service kits and replacement parts marked with the acronym (NLA) are no longer available.

TIME TO UPGRADE? Visit [Partner.LiftMaster.com](#)