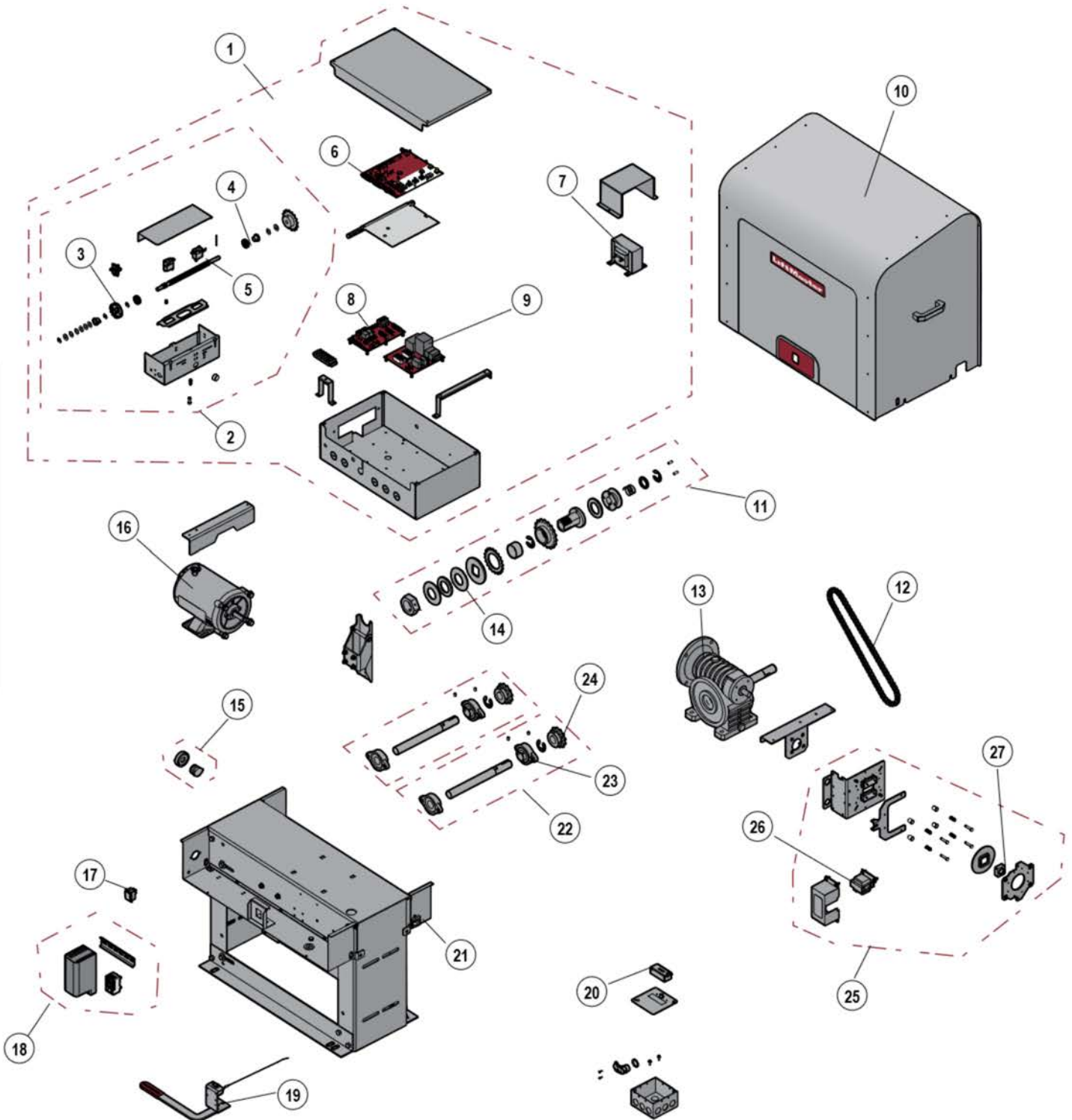


SL585U, SL585UL

REPLACEMENT PARTS DIAGRAM



SLIDE GATE

SL585U, SL585UL

INDIVIDUAL REPLACEMENT PARTS

KEY#	PART#	DESCRIPTION
1	K74-39295-1	E-BOX, SL585501U, SL585101U, SL585151U
	K74-39295-2	E-BOX, SL585503U, SL585103U
	K74-39295-3	E-BOX, SL585505U, SL585105U
2	K76-37687-1	LIMIT BOX KIT
3	K13-32087	RPM CUP
4	K13-10024	LIMIT NUT
5	K23-10041	LIMIT SWITCH, 10A, 125/250VAC
6	K1D6761-1CC	LOGIC BOARD, AC
7	K21-3260-1	TRANSFORMER, 120/208/230/460/60VA
	K204A0276	TRANSFORMER, 575VAC, 200VA
8	K1D8387-1CC	EXPANSION BOARD, UL325
9	K1D8284-1CC	MOTOR DRIVE BOARD, 1PH, SL585U, SL595U
	K1D8424-1CC	POWER BOARD, 3PH, SL585U, SL595U
	NOT SHOWN IN DIAGRAM	
	K2A0878	HALL EFFECT BOARD
	K75-37670	LIMIT SHAFT AND SPROCKET KIT, SL585U
	K77-38121	WIRE HARNESS, SL585U, SL595U
	K94-38062-1	POWER BOARD ID RESISTOR, 1/2HP, 3PH
	K94-38062-2	POWER BOARD ID RESISTOR, 1HP, 3PH
	K94-38062-4	POWER BOARD ID RESISTOR, 1/2HP, 575V
	K94-38062-5	POWER BOARD ID RESISTOR, 1HP, 575V

SERVICE KITS

KEY#	PART#	DESCRIPTION
10	K75-37576	COVER KIT
11	K75-34791	CLUTCH KIT, SL585
12	K19-48069-NP	LIMIT CHAIN KIT, #48X69, NP
13	K32-34792	GEAR REDUCER, 30:1
14	K39-34786	CLUTCH DISK
15	K94-37754	ALARM KIT, SL585U
16	K94-37694-1	MOTOR, SL585501U
	K94-37695	MOTOR, SL585503U
	K94-37739-1	MOTOR AND HARNESS KIT, SL585505U
	K94-37694-2	MOTOR, SL585101U
	K94-37766	MOTOR, SL585103U
	K94-37739-2	MOTOR AND HARNESS KIT, SL585105U
	K94-37694-3	MOTOR, SL585151U
	K23-34815-1	RESET SWITCH
17	K76-38057	HEATER KIT, 575V, SL585505U, SL585105U
18	K75-34790	DISCONNECT KIT
19	K75-38037	LATCH COVER AND SWITCH, 1PH
20	K75-18493	CHAIN GUIDE KIT
21	K75-34828	IDLER SHAFT KIT
22	K12-4164	FLANGED BEARING, SELF ALIGNING
23	15-50B12LGH	SPROCKET, 50B12, 1"
24	K71-B1PH-1	BRAKE SOLENOID, 120/240V, SL585U/SL595U
	K71-B3PH-1	BRAKE SOLENOID, 240V, 3PH
	K71-B3PH	INTERNAL BRAKE SOLENOID, 208/230V, 3PH
	K71-B575	INTERNAL BRAKE SOLENOID, 575V
	K22-120	BRAKE SOLENOID, 120V
25	K22-575-1	BRAKE SOLENOID, 575V
	K22-36900	BRAKE SOLENOID, 3PH, L5
	K75-10177	BRAKE HUB KIT
NOT SHOWN IN DIAGRAM		
	K10-3209	GATE BRACKET
	K11-3503	TAKE UP BOLT
	19-3025	CHAIN, #50X471, NP
	K75-34824	CHAIN GUARD KIT
	K80-9001	FEATHER KEY
	K94-37753	RESET SWITCH, WITH ID HARNESS KIT

NOTE: Service kits and replacement parts marked with the acronym (NLA) are no longer available.
TIME TO UPGRADE? Visit Partner.LiftMaster.com