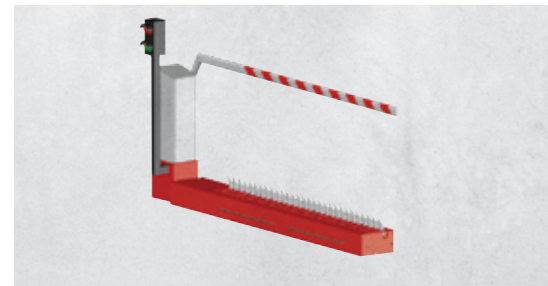


TRAFFIC AND PARKING SYSTEMS SPIKES, BARRIER GATES AND COMPONENTS

Your comprehensive product offering
for traffic and parking applications.



TRAFFIC AND PARKING
SYSTEMS PRODUCT LINE
SPIKES, BARRIER
AND COMPONENTS

LiftMaster

LIFTMASTER® ADVANTAGES

Top-down modular design

- Extremely easy to remove debris & service
- Mechanism is up out of water or debris

Specifically engineered fishhook tooth design

- Will not harm tire going the correct direction- no tire chipping
- When challenged, it rips through the tire for maximum damage

A TOTAL SOLUTION FOR EVERY APPLICATION

LiftMaster has everything you need to deliver an integrated access solution to every customer. From gate operators and accessories to access control, our products are engineered to work together as one seamless system.



GATE OPERATORS

With state-of-the-art technology and a strong, rugged construction, you can rely on our gate operators to give you access anytime you need it.



ACCESS CONTROL

With entry systems to keypads, card readers to perimeter alert systems, our lineup of feature-rich solutions provides the perfect access system for your needs.



SAFETY ENTRAPMENT PROTECTION

LiftMaster has engineered our operators and monitored safety entrapment protection devices to work together as a UL 325 compliant system.



GATE HARDWARE

Our comprehensive line of hinges, wheels, covers and guide rollers are engineered for durability, providing trouble-free operation for your customers.



TABLE OF CONTENTS



MANUAL TRAFFIC AND PARKING SYSTEMS

- PG. 5 | SECURE MOUNT IN-GROUND SYSTEM
- PG. 6 | EASY MOUNT IN-GROUND SYSTEM
- PG. 7 | CONCEALED MOUNT IN-GROUND SYSTEM
- PG. 7 | NON-PASSIVE IN-GROUND SYSTEM
- PG. 8 | SURFACE MOUNT MANUAL SYSTEM
- PG. 9 | LOW PROFILE MANUAL SYSTEM
- PG. 9 | NON-PASSIVE MANUAL SYSTEM



MOTORIZED TRAFFIC AND PARKING SYSTEMS

- PG. 11 | IN-GROUND MOTORIZED TRAFFIC SYSTEM
- PG. 11 | SURFACE MOUNT MOTORIZED TRAFFIC SYSTEM

MANUAL BARRIER GATES

- PG. 13 | MANUAL LIFT BARRIER GATES
- PG. 14 | MANUAL SWING BARRIER GATES



ACCESSORIES FOR TRAFFIC AND PARKING SYSTEMS

- PG. 16 | WARNING ALERTS
- PG. 16 | MOUNTING POST
- PG. 17 | STOP AND GO SIGNAL
- PG. 17 | INSTALLATION HARDWARE
- PG. 18 | HEATERS
- PG. 18 | SPEED BUMPS
- PG. 19 | INSTALLATION DO'S AND DON'TS

MANUAL TRAFFIC AND PARKING SYSTEMS

Whether you're looking for security, privacy, traffic control or all of the above, our Parking and Traffic Solutions come with advanced features and state-of-the-art equipment to help you manage traffic flow quickly and securely.



HOW TO ORDER

1 | CHOOSE A MODEL

1 1 3 0 0

2 | SELECT A FINISH

1 1 3 0 0 P



POWDER
COATED
RED



POWDER
COATED
YELLOW



CORROSION
RESISTANT*
RED



CORROSION
RESISTANT*
YELLOW

3 | ORDER

To place your order visit:
Dealer.LiftMaster.com

Call 800.323.2276

Email Customer.Service@LiftMaster.com

Contact your LiftMaster® Sales Representative

IN-GROUND MANUAL

Designed and engineered to allow traffic to flow in a single direction, the Cobra™ System is mechanically activated with a counter-balanced back-up system for reliable, low maintenance operation.

SECURE MOUNT



**In-ground installation.
Excavation required.**

STANDARD DUTY



Type: Standard Duty
Material: Steel Top Plate
 (0.25 in.)
Length/Weight: 3 ft. Sections
 (80 lbs. ea.)
Load Rate: 15,000 lbs. per
 Single Axle Load
Finish: P PY C CY



Type: Standard Duty
Material: Steel Top Plate
 (0.25 in.)
Length/Weight: 6 ft. Sections
 (166 lbs. ea.)
Load Rate: 15,000 lbs. per
 Single Axle Load
Finish: P C

HEAVY DUTY



Type: Heavy Duty
Material: Steel Top Plate
 (0.375 in.)
Length/Weight: 3 ft. Sections
 (122 lbs. ea.)
Load Rate: 40,000 lbs. per
 Single Axle Load
Finish: P C



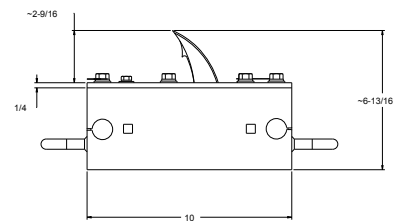
Type: Heavy Duty
Material: Steel Top Plate
 (0.375 in.)
Length/Weight: 6 ft. Sections
 (251 lbs. ea.)
Load Rate: 40,000 lbs. per
 Single Axle Load
Finish: P C

FEATURES

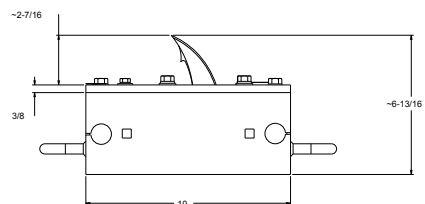
- Top-down design for easy maintenance
- Curved tooth, fishhook design
- Zinc plated moving parts
- Stainless steel hardware
- Reliable counter-balanced system
- Sound dampeners
- Built-in latch down device



STANDARD DUTY



HEAVY DUTY



*Hot Dipped Galvanized - ASTM A123/A123M

IN-GROUND MANUAL

EASY MOUNT



Install in less than 3 hours.
Minimal excavation required, epoxy into place in asphalt or concrete.

FEATURES

- Top-down design for easy maintenance
- Curved tooth, fishhook design
- Zinc plated moving parts
- Stainless steel hardware
- Reliable counter-balanced system
- Sound dampeners
- Built-in latch down device

STANDARD DUTY



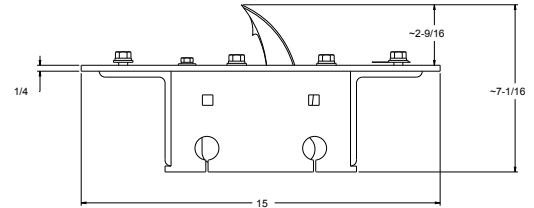
Type: Standard Duty
Material: Steel Top Plate (0.25 in.)
Length/Weight: 3 ft. Sections (111 lbs. ea.)
Load Rate: 20,000 lbs. per Single Axle Load
Finish: **P** **C**



Type: Standard Duty
Material: Steel Top Plate (0.25 in.)
Length/Weight: 6 ft. Sections (225 lbs. ea.)
Load Rate: 20,000 lbs. per Single Axle Load
Finish: **P** **C**



STANDARD DUTY



HEAVY DUTY

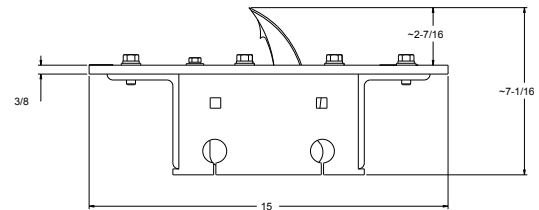


Type: Heavy Duty
Material: Steel Top Plate (0.375 in.)
Length/Weight: 3 ft. Sections (139 lbs. ea.)
Load Rate: 40,000 lbs. per Single Axle Load
Finish: **P** **C**



Type: Heavy Duty
Material: Steel Top Plate (0.375 in.)
Length/Weight: 6 ft. Sections (285 lbs. ea.)
Load Rate: 40,000 lbs. per Single Axle Load
Finish: **P** **C**

HEAVY DUTY



IN-GROUND MANUAL

CONCEALED MOUNT



Below-grade teeth stay submerged until activated by wrong-way traffic. Only then is the barbed tooth exposed, puncturing the tire of the offending vehicle.

HEAVY DUTY

1 1 3 4 1 C

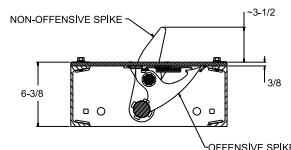
Type: Heavy Duty
Material: Steel Top Plate (0.375 in.)
Length/Weight: 3 ft. Sections (80 lbs. ea.)
Load Rate: 25,000 lbs. per Single Axle Load
Finish: Corrosion Resistant* Red

FEATURES

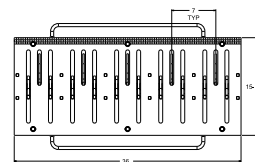
- Above-grade non-penetrating teeth and below-grade penetrating teeth
- Durable spring-loaded teeth with counter-balanced back-up



SIDE VIEW



TOP VIEW



NON-PASSIVE



Stops traffic in both directions. Control box locks all spikes in up or down position.

1 3 2 4 0 P-11

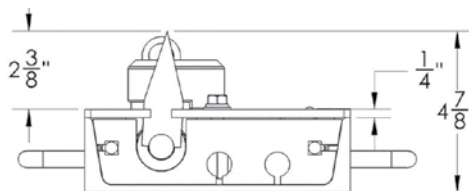
Type: Non-Passive In-Ground Manual Traffic System
Material: Steel Top Plate (0.375 in.)
Length/Weight: 11 ft. (270 lbs. ea.)
Load Rate: 36,000 lbs. per Single Axle Load
Finish: Powder Coated Red

1 3 1 0 0 XP

Type: 3 ft. Extension for Non-Passive In-Ground Manual Traffic System
Length/Weight: Can be Combined up to 24 ft. (90 lbs. ea.)
Load Rate: 36,000 lbs. per Single Axle Load
Finish: Powder Coated Red

FEATURES

- Stops unwanted entry or exit
- Modular extensions up to 24 ft.



*Hot Dipped Galvanized - ASTM A123/A123M

SURFACE MANUAL

Designed and engineered to allow traffic to flow in a single direction, the system is mechanically activated with a counter-balanced back-up system for reliable, low maintenance operation.

SURFACE MOUNT



No trenching, also serves as a speed bump. Install on asphalt or concrete.

FEATURES

- Top-down design for easy maintenance
- Curved tooth, fishhook design
- Durable spring-loaded teeth with counter-balanced back-up
- Zinc plated moving parts
- Stainless steel hardware
- Sound dampeners
- Built-in latch down device

STANDARD DUTY



Type: Standard Duty
Material: Steel Top Plate (0.25 in.)
Length/Weight: 3 ft. Sections (114 lbs. ea.)
Load Rate: 15,000 lbs. per Single Axle Load
Finish: P PY C CY



End Bevels: Corrosion Resistant. Caps the End of Spike Section.
Type: End Bevels for Surface Mount Manual Traffic System
Finish: E EY



HEAVY DUTY

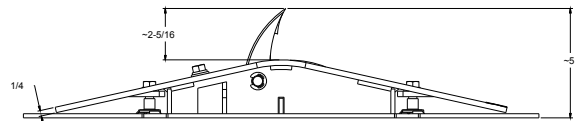


Type: Heavy Duty
Material: Steel Top Plate (0.375 in.)
Length/Weight: 3 ft. Sections (132 lbs. ea.)
Load Rate: 36,000 lbs. per Single Axle Load
Finish: P C

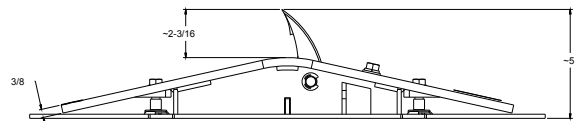


End Bevels: Corrosion Resistant. Caps the End of Spike Section.
Type: End Bevels for Heavy Duty Surface Mount Manual Traffic System
Finish: End Bevel Red

STANDARD DUTY



HEAVY DUTY



SURFACE MANUAL

LOW PROFILE



Friendly to low profile vehicles, only 4 inches tall.
Install on asphalt or concrete.

STANDARD DUTY



Type: Low Profile Surface Mount Manual Traffic System
Material: Steel Top Plate (0.375 in.)
Length/Weight: 3 ft. Sections (114 lbs. ea.)
Load Rate: 36,000 lbs. per Single Axle Load
Finish: **P** **PY** **C** **CY**

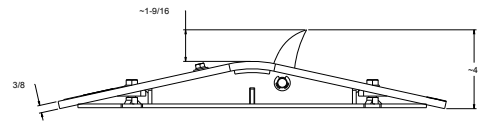
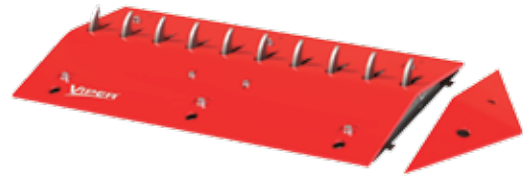


End Bevels: Corrosion Resistant. Caps the End of Spike Section.
Type: End Bevels for Low Profile Surface Mount Manual Traffic System
Finish: **E** **EY**



FEATURES

- Top-down design for easy maintenance
- Curved tooth, fishhook design
- Durable spring-loaded teeth with counter-balanced back-up
- Zinc plated moving parts
- Stainless steel hardware
- Sound dampeners
- Built-in latch down device



NON-PASSIVE



Stops traffic in both directions. Control box locks all spikes in up or down position.
Install on asphalt or concrete.



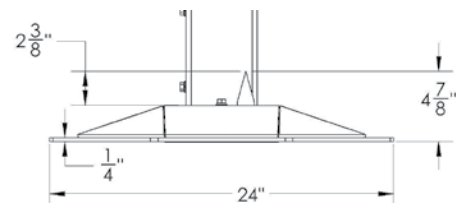
Type: Non-Passive Surface Manual Traffic System
Material: Steel Top Plate (0.375 in.)
Length/Weight: 11 ft. Sections (370 lbs. ea.)
Load Rate: 36,000 lbs. per Single Axle Load
Finish: Powder Coated Red



Type: 3 ft. Extension for Non-Passive Surface Manual Traffic System
Length/Weight: Can be Combined up to 24 ft. (135 lbs. ea.)
Load Rate: 36,000 lbs. per Single Axle Load
Finish: Powder Coated Red

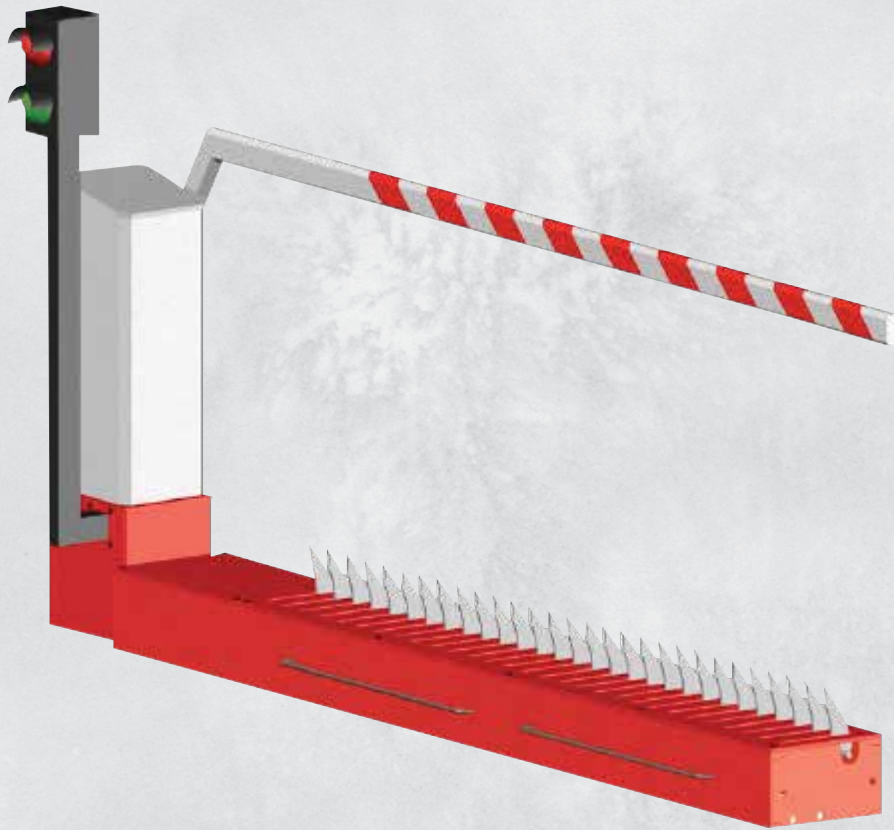
FEATURES

- Stops unwanted entry or exit
- Modular extensions up to 24 ft.
- Top-down design for easy maintenance
- Aggressive tooth design
- Durable spring-loaded teeth with counter-balanced back-up



MOTORIZED TRAFFIC AND PARKING SYSTEMS

Allows unrestricted passage to authorized vehicles by electro-mechanically moving the teeth up to an active or secured position, and then down. The modular system with Magnetic™ Brand Operator allows for design flexibility and is easy to install in manned or unmanned sites. This system can be installed in new or existing facilities and easily integrated with multiple access control options.



HOW TO ORDER

1 | CHOOSE A MODEL

1 | 3 | 1 | 0 | 0 | M |

2 | SELECT A FINISH

1 | 3 | 1 | 0 | 0 | M | P |

3 | SELECT A HANDING OPERATION SYSTEM‡

1 | 3 | 1 | 0 | 0 | M | P | -L/R |

4 | SELECT A LENGTH

1 | 3 | 1 | 0 | 0 | M | P | -L15 |

5 | ORDER

To place your order visit: Dealer.LiftMaster.com

Call 800.323.2276

Email Customer.Service@LiftMaster.com

Contact your LiftMaster® Sales Representative

‡Handing is the side that operator will be installed on, dependent on the flow of traffic: (L) Left or (R) Right.

MOTORIZED

Handing is the side that the operator will be installed on, dependent on the flow of traffic: (L) Left or (R) Right.

FEATURES

- Top-down design for easy maintenance
- 120 volt power 50/60 Hz
- 100% duty cycle
- IP54 barrier housing (white)
- Auto-open and power failure feature
- Integrated dual-channel loop detector
- Complete VarioBoom with protected foam edge
- Integrates with all access control devices
- Modular-max. spike system length 24 ft.
- Conditioned for heater cable system



See accessory section for warning alerts and signs

IN - GROUND



Type: In-Ground Motorized Traffic System

Power: 120 Volt, 50/60 Hz

Handing Operation Position:

Left or Right

Length: 9 12 15 18 ft.

Sections

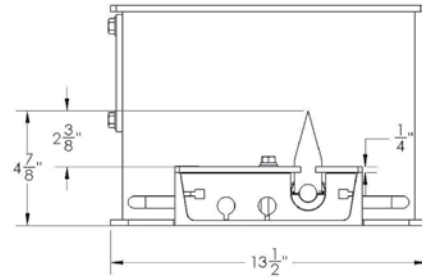
Finish: P C*



Type: 3 ft. Extension for In-Ground Motorized Traffic System

Length/Weight: Can be Combined up to 24 ft. (90 lbs. ea.)

Finish: P C*



SURFACE



Type: Surface Mount Motorized Traffic System

Power: 120 Volt, 50/60 Hz

Handing Operation Position:

Left (L) or Right (R)

Length: 9 12 15 18 ft.

Sections

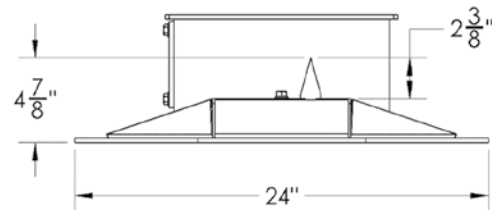
Finish: P C*



Type: 3 ft. Extension for Surface Mount Motorized Traffic System

Length/Weight: Can be Combined up to 24 ft. (135 lbs. ea.)

Finish: P C*



MANUAL BARRIER TRAFFIC AND PARKING SYSTEMS

Non-motorized traffic control for unmanned entrances that do not require credentialed access.



HOW TO ORDER

1 | CHOOSE A MODEL

1 4 0 0 0 N -12

2 | ORDER

To **place your order** visit:
Dealer.LiftMaster.com

Call 800.323.2276

Email Customer.Service@LiftMaster.com

Contact your LiftMaster® Sales Representative

LIFT MANUAL BARRIER

Available in in-ground or surface mount versions, these lift gates are factory balanced and feature a lightweight round aluminum arm with red/white stripes.

FEATURES

- Galvanized pipe
- Posts 2.875 in. OD pipe
Gates 1.875 in. OD pipe
- Pivot assembly with LiftMaster hinge
- May be padlocked in the open or closed position

IN - GROUND



An easy to install, effective solution.



1 4 0 0 N -12

Type: In-Ground Manual Lift Barrier Gates
Color: Red and White
Length/Weight: 12 ft. Sections (190 lbs. ea.)

1 4 0 0 N -16

Type: In-Ground Manual Lift Barrier Gates
Color: Red and White
Length/Weight: 16 ft. Sections (207 lbs. ea.)

1 4 0 0 N -20

Type: In-Ground Manual Lift Barrier Gates
Color: Red and White
Length/Weight: 20 ft. Sections (233 lbs. ea.)

1 4 0 0 NR

Type: In-Ground Manual Lift Barrier Receiver Post
Color: Red
Weight: 40 lbs. ea.
Mounting: 0.38 in. plate, 8 x 8 in. thick with four 0.5 in. holes for mounting

Barrier Receiver Post required with all In-Ground Manual Lift Barrier Gates over 15 ft. long.

SURFACE MOUNT



Easy installation for existing or new applications.



1 4 0 0 S -12

Type: Surface Mount Manual Lift Barrier Gates
Color: Red and White
Length/Weight: 12 ft. Sections (190 lbs. ea.)
Mounting: 0.38 in. plate, 8 x 8 in. thick with four 0.5 in. holes for mounting

1 4 0 0 S -16

Type: Surface Mount Manual Lift Barrier Gates
Color: Red and White
Length/Weight: 16 ft. Sections (207 lbs. ea.)
Mounting: 0.38 in. plate, 8 x 8 in. thick with four 0.5 in. holes for mounting

1 4 0 0 S -20

Type: Surface Mount Manual Lift Barrier Gates
Color: Red and White
Length/Weight: 20 ft. Sections (233 lbs. ea.)
Mounting: 0.38 in. plate, 8 x 8 in. thick with four 0.5 in. holes for mounting

1 4 0 0 SR

Type: Surface Mount Manual Lift Barrier Receiver Post
Color: Red
Weight: 40 lbs. ea.
Mounting: 0.38 in. plate, 8 x 8 in. thick with four 0.5 in. holes for mounting

Barrier Receiver Post required with all Surface Mount Manual Lift Barrier Gates over 15 ft. long.

SWING/IN-GROUND MANUAL BARRIER

Non-motorized means of traffic control, consisting of galvanized pipe and pivot assembly with a LiftMaster® Hinge.

FEATURES

- Galvanized pipe
- Posts 2.875 in. OD pipe
- Gates 1.875 in. OD pipe
- Pivot assembly with LiftMaster hinge
- May be padlocked in the open or closed position

SINGLE ARM



Ideal for single lane driveways.



1 4 0 1 0 -12

Type: Single Leaf Manual Swing Barrier Gates
Dimensions: 12 ft.
Weight: 145 lbs. ea.
Finish: Galvanized

1 4 0 1 0 -16

Type: Single Leaf Manual Swing Barrier Gates
Dimensions: 16 ft.
Weight: 167 lbs. ea.
Finish: Galvanized

1 4 0 1 0 -20

Type: Single Leaf Manual Swing Barrier Gates
Dimensions: 20 ft.
Weight: 188 lbs. ea.
Finish: Galvanized

1 4 0 3 0 R

Type: Manual Swing Barrier Gate Receiver Post
Dimensions: 20 ft.
Weight: 40 lbs. ea.
Finish: Galvanized

Required for use with Single Leaf Swing Gate; recommended for use with any gate in the open position.

DUAL ARMS



Best used for wide driveways.



1 4 0 2 0 -20

Type: Double Leaf Manual Swing Barrier Gates
Total Dimensions: 20 ft.
Weight: 275 lbs. ea.

1 4 0 2 0 -24

Type: Double Leaf Manual Swing Barrier Gates
Total Dimensions: 24 ft.
Weight: 320 lbs. ea.

1 4 0 2 0 -30

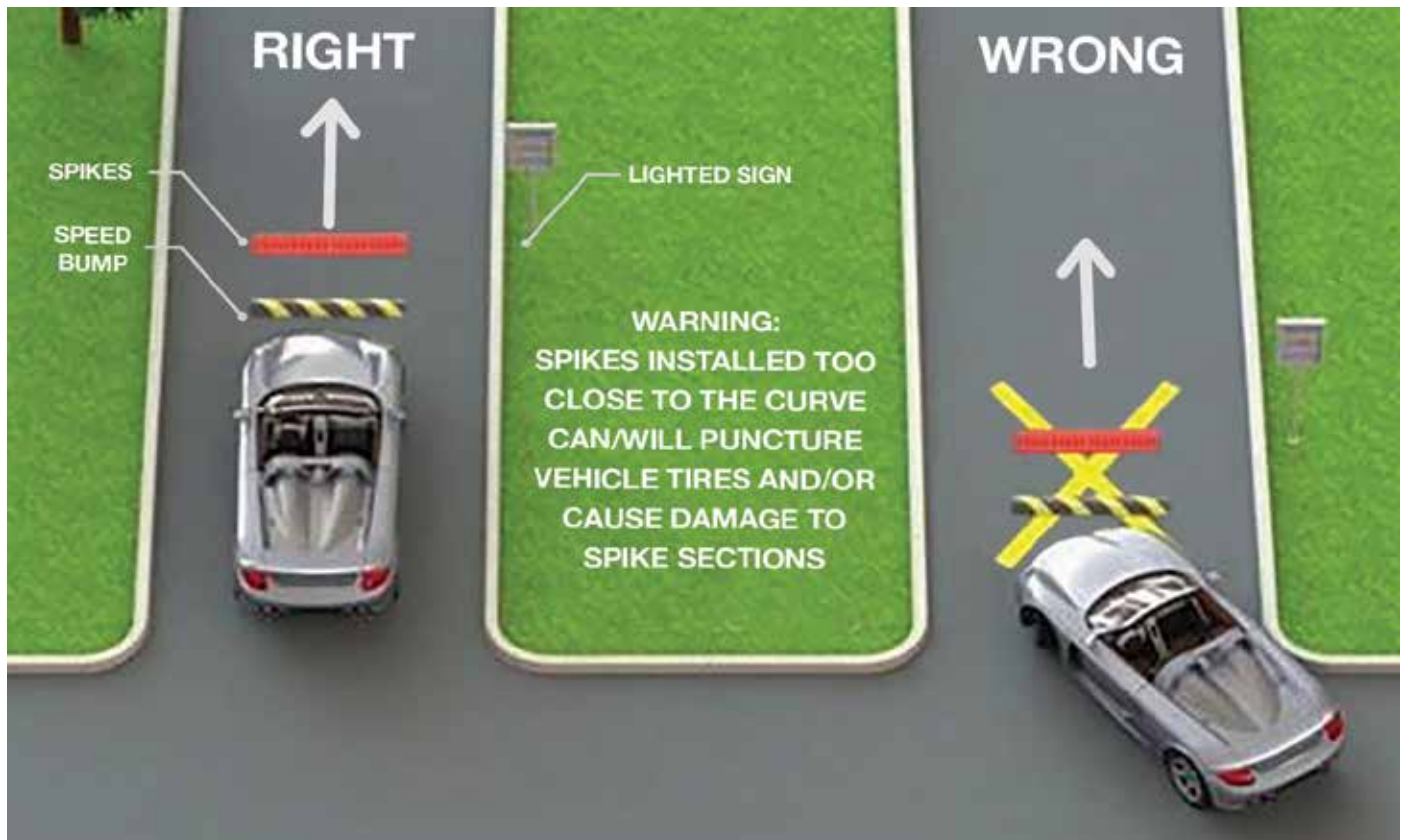
Type: Double Leaf Manual Swing Barrier Gates
Total Dimensions: 30 ft.
Weight: 370 lbs. ea.

The Manual Swing Barrier Gate Receiver Post (14030R) is recommended for use with any gate in the open position.

ACCESSORIES AND INSTALLATION

Warning signs must be used in all traffic spike applications. They warn drivers of speed, direction and potential damage to their vehicles.

LiftMaster provides a complete line of warning signs, signal lights and speed bumps to complete your installation.



SYSTEM SAFETY REQUIREMENTS

- | Maximum speed 5 mph
- | Tires must pass over the unit so that the tire is parallel to teeth and not at an angle
- | Warning signs required
- | Locating and installing a Traffic Spike incorrectly or not using warning signs voids any warranty

WARNING ALERTS AND TRAFFIC SIGNS

Ensures that users understand the potential for danger as they approach the traffic system.

2-SIDED TRAFFIC SIGN AND MOUNTING POST

Must be used with every traffic spike system. Use mounting post with warning signs.

FEATURES

- 18 ft. x 24 ft. x 0.08 ft.
- EGP reflective aluminum
- Aluminum heavy duty steel frame, with black finish

1 4 1 0 0

Type: Lighted Warning Sign for Manual Traffic Systems
Material: Aluminum Sign with Heavy Duty Powder Coated Steel Frame
Color: Red/Green
Frame Color: Black
Dimensions: Sign: 18 x 24 in. Frame: 22.25 x 28.88 in.
Power: 110 VAC
Weight: 40 lbs. ea.

1 4 1 1 0

Type: Reflective Warning Sign for Manual Traffic Systems
Material: Aluminum Sign with Heavy Duty Powder Coated Steel Frame
Color: Red/Green
Frame Color: Black
Dimensions: Sign: 18 x 24 in. Frame: 22.25 x 28.88 in.
Weight: 38 lbs. ea.

1 4 1 1 5

Type: Lighted Warning Sign for Automated Traffic Systems
Material: Aluminum Sign with Heavy Duty Powder Coated Steel Frame
Color: Red/Red
Frame Color: Black
Dimensions: Sign: 18 x 24 in. Frame: 22.25 x 28.88 in.
Power: 110 VAC
Weight: 40 lbs. ea.

1 4 1 5 0

Type: Reflective Warning Sign for Automated Traffic Systems
Material: Aluminum Sign with Heavy Duty Powder Coated Steel Frame
Color: Red/Red
Frame Color: Black
Dimensions: Sign: 18 x 24 in. Frame: 22.25 x 28.88 in.
Weight: 38 lbs. ea.

1 4 1 6 0 N

Type: In-Ground Mounting Post for Warning Sign
Color: Black
Dimensions: 72 in. height, 2 x 2 in. round post
Weight: 18 lbs. ea.

1 4 1 6 0 S

Type: Surface Mount with Flange Mounting Post for Warning Sign
Color: Black
Dimensions: 48 in. height, 4 x 4 in. flange, 2 x 2 in. round post
Weight: 16 lbs. ea.



WARNING ALERTS AND TRAFFIC SIGNS

LED STOP-GO SIGNAL

For use with Motorized Traffic System.

1 3 3 4 0 P

Type: LED Stop-Go Signal Light with Heavy Duty Gooseneck Post/Mounting Bracket
Power: LED Low Voltage 12-24 AC/DC
Color: Black
Dimensions: Post: 2 x 3 in., 63 in. height, Enclosure: 5 x 10 x 2.75 in., Lenses: 4 in. diameter
Finish: UV Resistant Housing



FEATURES

- 4 in. diameter lenses
- Entire enclosures 5 in. x 10 in. x 2.75 in.
- UV resistant housing
- Built to withstand demanding weather
- Easy installation
- Heavy duty gooseneck post with mounting bracket, black finish

CONCRETE INSTALLATION SURFACE MOUNT SPIKES OF

To complete your installation.



1 4 2 5 0

Type: Epoxy
Installation: Asphalt or Concrete
Dimensions: 1 Gallon
Weight: 8 lbs. ea.



C M P

Type: LDT Anchor Bolts
Installation: Surface Mount
Dimensions: 0.38 in. x 4 in.
Contents: Package of 8, single piece (14320T)



D B 3 8

Type: Drill Bit SDS plus 0.38 in.
Installation: Does Not Require Nuts/Washers
Dimensions: Extra-large hex washer head

FEATURES

- Easy to install
- Does not require nuts and washers
- Extra-large hex washer heads increased bearing surface with the fixture being fastened

HEATERS

To keep your system working in cold weather, these fully sealed and moistureproof cables are flexible and fire resistant.

C H T R -

Type: Mineral Insulated Snow Melting Cable Assembly

Power: 120 Volt

Lead: Standard cold, 20 ft. length

Content Included: NEMA 4X thermostat, heater embedded plaque/marker

Length: 18 24 30 48 ft.

Installation: All in-ground and surface mount traffic systems, measurement of heater cable is twice the length of the traffic system.

FEATURES

- Stainless steel
- Standard cold lead length 20 ft.
- Flexible
- Fire resistant
- No degradation



SPEED BUMPS

Ideal to slow vehicles when approaching traffic systems or when speed needs to be controlled.

1 6 1 0 0 -6

Type: Speed Bump - 6 ft. length
Material: 100% Recycled Rubber
Color: Black and Yellow
Installation: Asphalt or Concrete
Dimensions: 6 ft. L x 12 in. W x 2.25 in. H
Weight: 51 lbs. ea.

1 6 1 0 0 -4

Type: Speed Bump - 4 ft. length
Material: 100% Recycled Rubber
Color: Black and Yellow
Installation: Asphalt or Concrete
Dimensions: 4 ft. L x 12 in. W x 2.25 in. H
Weight: 32 lbs. ea.



1 6 1 0 0 E

Type: End Cap for Speed Bumps
Material: 100% Recycled Rubber
Dimensions: 9 in. L x 12 in. W x 2.25 in. H
Weight: 5.5 lbs. ea.

1 6 7 0 0 R

Type: Rebar Spike for Speed Bumps
Installation: Asphalt Only
Dimensions: 14 in.

Bump,MP

Type: Hardware for Speed Bumps
Contents: 4 each - 6 in. lag bolt, shield and washer (one package needed for each speed bump)

ENSURE A SAFE INSTALLATION AND REDUCE LIABILITY

DO'S

- Clearly warn pedestrians and drivers about the potential danger
- Install in an area with high visibility
- Install in such a way that traffic flows over teeth at a strict 90 degrees
- Leave adequate drainage channels below in-ground units
- Make sure the traffic controller you choose is appropriate for the application
- Add speed bumps before traffic controllers when additional speed control is required and/or desired
- Consult manufacturer for optimal placement of units, based on varying road widths

DON'TS

- Don't install on a curve
- Don't install on uneven or non-level surfaces
- Don't install on inappropriate road surface such as brick, dirt or gravel
- Don't install in areas that have a lot of dirt, debris and gravel
- Don't forget to properly maintain the units



HOW TO ORDER

1 | CHOOSE A MODEL

1 | 2 | 3 | 2 | 1 |



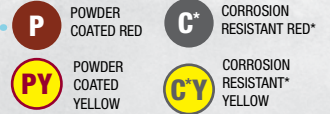
3 | SELECT A LENGTH

1 | 2 | 3 | 2 | 1 | PY | -9 |

Some Traffic and Parking Systems are available in different lengths. When applicable, length must be selected when ordering products.

2 | SELECT A FINISH

1 | 2 | 3 | 2 | 1 | P |



Most Traffic and Parking Systems are available in several finishes. When applicable, finishes must be selected when ordering products.

4 | ORDER

To **place your order** visit: Dealer.LiftMaster.com

Call 800.323.2276

Email Customer.Service@LiftMaster.com

Contact your LiftMaster® Sales Representative

TOOLS AND RESOURCES

For additional information on a complete LiftMaster solution, utilize the following tools and resources.

PRINT RESOURCES

- LiftMaster Product Catalog, April 2017
- Gate Hardware Product Line

ONLINE TOOLS

- LiftMaster.com/TrafficSystems
- Dealer.LiftMaster.com
- LiftMasterTraining.com
- Catalog.LiftMaster.com (Product Catalog)



PLACE YOUR ORDER TODAY.

Dealer.LiftMaster.com | 800.323.2276
Email Customer.Service@LiftMaster.com
Contact Your LiftMaster Sales Representative

© 2017 LiftMaster All Rights Reserved
300 Windsor Drive, Oak Brook, IL 60523
LiftMaster.com
LMGTENBROOTS 2/17

LiftMaster